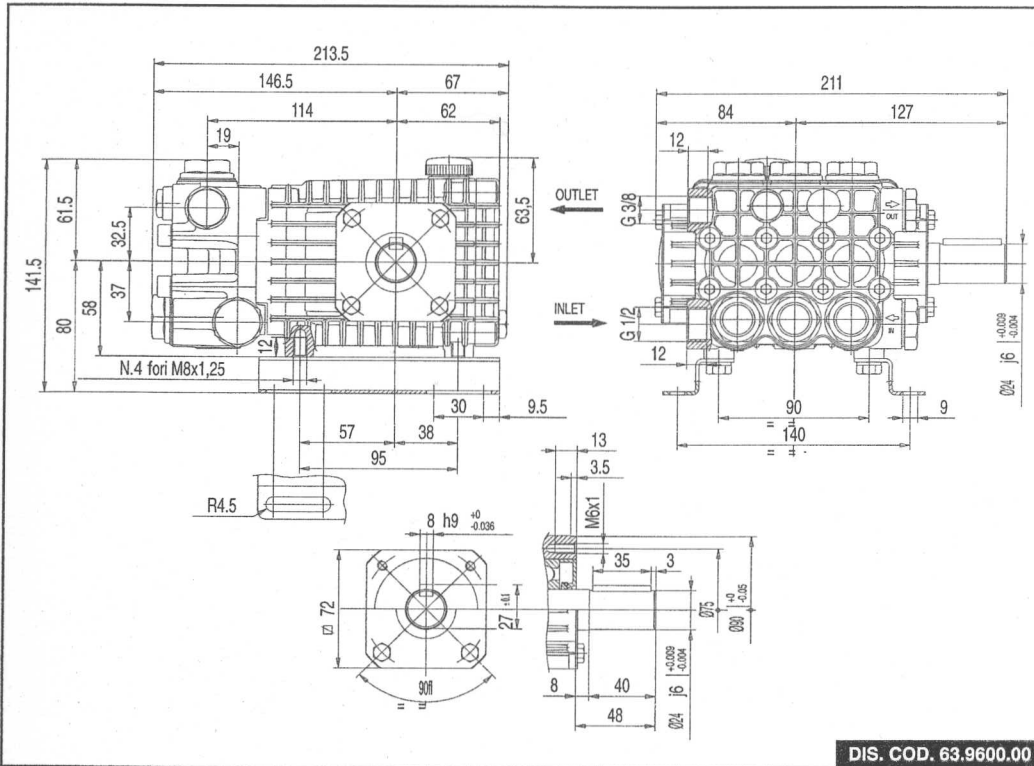


OVERALL DIMENSIONS • ÄUSSERE ABMESSUNGEN • DIMENSIONS TOTALES
DIMENSIONES TOTALES • DIMENSIONI D'INGOMBRO



DIS. COD. 63.9600.00

- LUBRICATION:** Check the oil from time. Change the oil after 50 Hrs. operation and then after every 500 Hrs. We recommend INTERPUMP OIL X-9.9. (SAE 15W40 Mineral) - OIL CAPACITY 0.36 ℓ.
- SCHMIERUNG:** Der Ölstand ist in regelmässigen Abständen zu kontrollieren. Der Ölwechsel muss nach den ersten 50 Arbeitsstunden, in der Folge alle 500 Stunden, vorgenommen werden. Es sollte INTERPUMP ÖL X-9.9 (SAE 15W40 Mineral) verwendet werden - Ölinhalt 0,36 ℓ.
- LUBRIFICATION:** Contrôler régulièrement le niveau d'huile. La première vidange doit être faite au bout de 50 heures maximum, ensuite faire une vidange toutes les 500 heures, on conseille huile INTERPUMP X-9.9. (SAE 15W40 Minérale) - CAPACITÉ D'HUILE 0,36 ℓ.
- LUBRIFICACIÓN:** Controlar periódicamente el nivel del aceite. El cambio del aceite, al comienzo, hay que hacerlo después de 50 horas de trabajo, luego cada 500 horas. Se aconseja aceite INTERPUMP X-9.9. (SAE 15W40 Mineral) - CAPACIDAD 0,36 ℓ.
- LUBRIFICAZIONE:** Controllare periodicamente il livello dell'olio. Il cambio dell'olio deve essere fatto inizialmente dopo 50 ore di lavoro, successivamente ogni 500 ore. Si consiglia olio INTERPUMP X-9.9. (SAE 15W40 Minerale) - CAPACITÀ OLIO 0,36 ℓ.



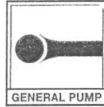
INTERPUMP GROUP

VIA E. FERMI, 25 - 42049 S. ILARIO - REGGIO EMILIA (ITALY)
TEL. +39 - 0522 - 904311 - TELEFAX + 39 - 0522 - 904444
E-mail: info@interpumpgroup.it - http://www.interpumpgroup.it

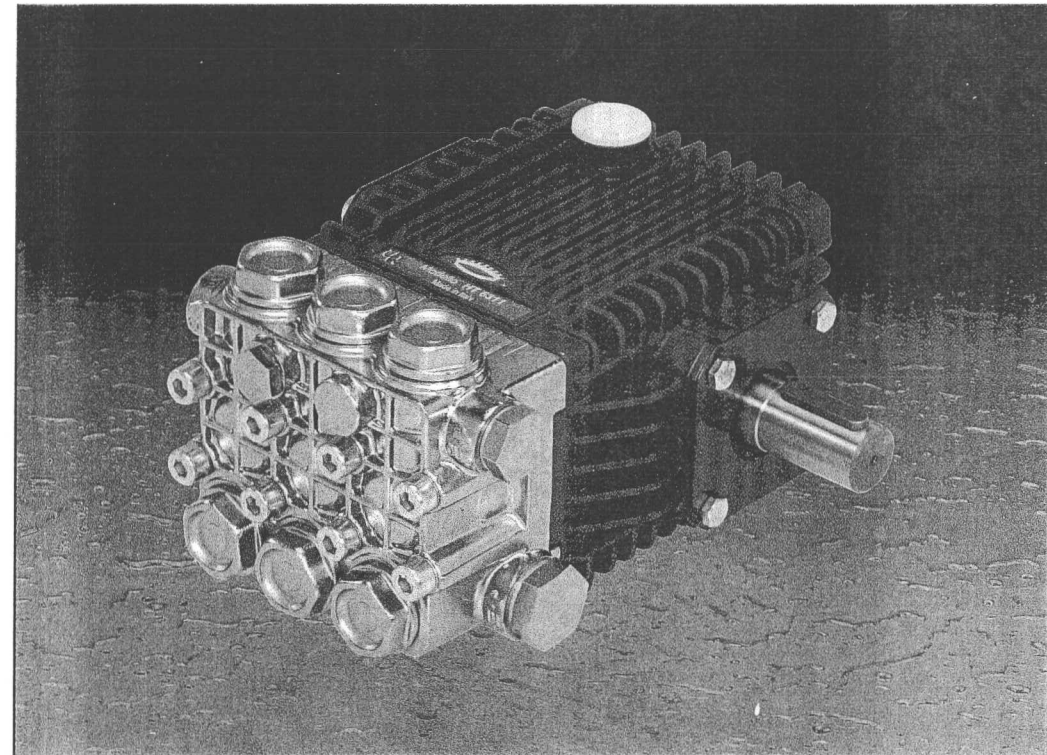
Cod. 63.9602.03 - 04/09 - 500



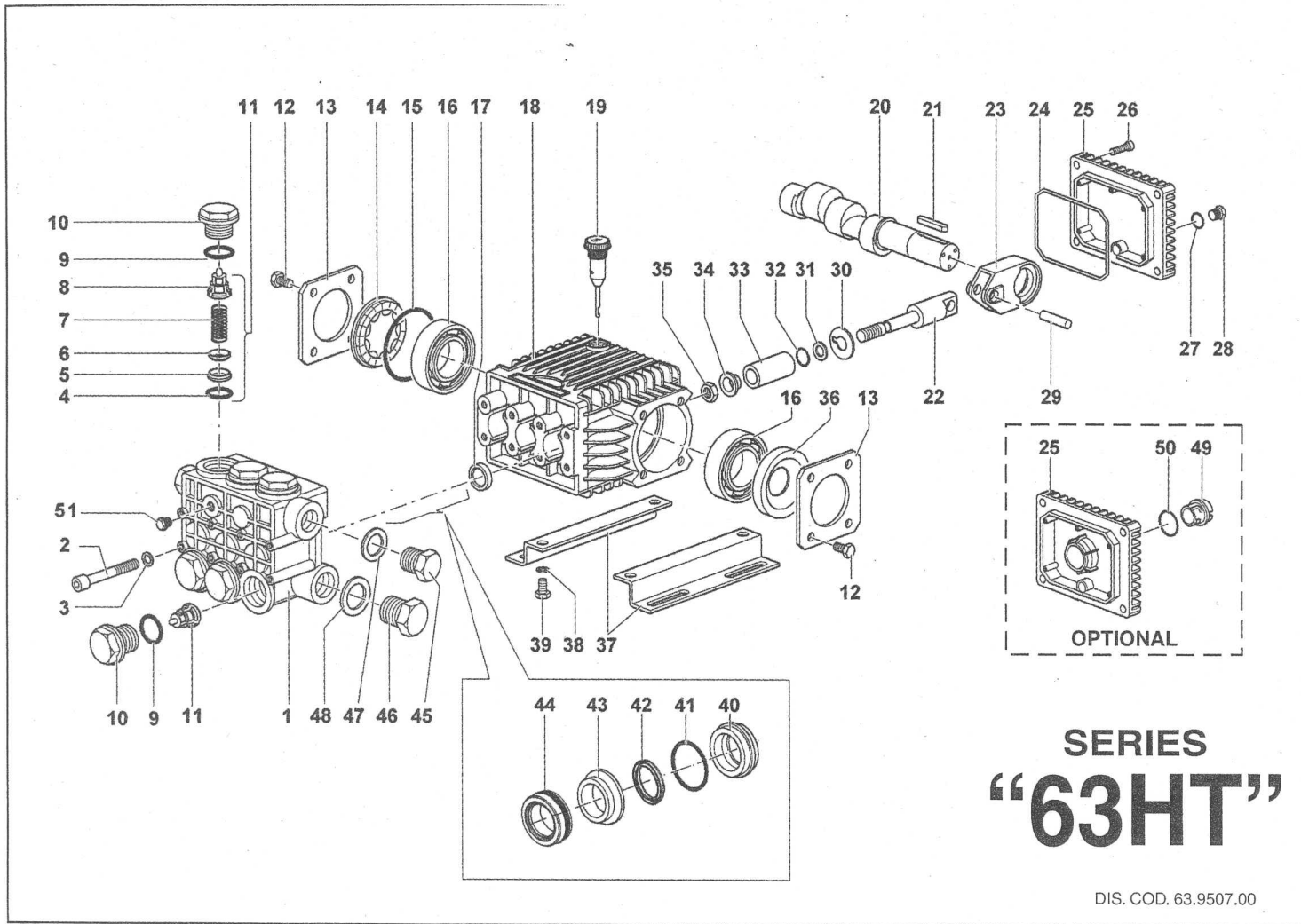
**INTERPUMP
GROUP**



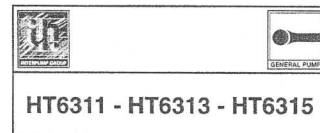
63HT Series



Pump type	Volume Leistung Débit Caudal Portata		Pressure Druck Pression Presión Pressione			r.p.m. u.p.m. t/min. r/min. g/min.	Required Leistung Puissance Potencia Potenza	Max. temperature Max. Temperatur Température max. Temperatura max. Temperatura max.		Weight Poids Gewicht Peso Peso
	l/min	G.P.M. (USA)	bar	MPa	p.s.i.			Hp / kW	°C	
HT6311	11	2.9	140	14	2030	1450	4 / 2.94	85	185	8.15
HT6313	13	3.43	170	17	2465		5.5 / 4.04			8.15
HT6315	15	3.96	140	14	2030		5.5 / 4.04			8.15



KIT N.	KIT 123	KIT 158	KIT 159	KIT 204	KIT 205
Position included	4 - 5 - 6 7 - 8 - 9 (11)	9 - 10	17	42 - 44	40 - 41 42 - 43 44
Posizioni incluse					
N. pcs.	6	6	3	3	1



POS.	CODE CODICE	DESCRIPTION DESCRIZIONE	N. PCS.
1	63.1213.41	Testata - Nickel	1
2	99.3192.00	Vite M 8x65 UNI 5931 8.8 tropicalizzata	8
3	96.7014.00	Rosetta Ø 8,4x13x0,8 SCHNORR	8
4	90.3841.00	OR Ø 17,13x2,62 (3068)	KIT 123 6
5	36.2003.66	Sede valvola	KIT 123 6
6	36.2001.76	Valvola	KIT 123 6
7	94.7376.00	Molla Ø m. 9,4x14,8 INOX	KIT 123 6
8	36.2025.51	Guida valvola	KIT 123 6
9	90.3847.00	OR Ø 20,24x2,62 (3081) - 90 Sh.	KIT 158 6
10	98.2225.00	Tappo M 24x1,5 - Nickel	KIT 158 6
11	36.7115.01	Gruppo valvola	KIT 123 6
12	99.1807.00	Vite M 8x10 UNI 5739 8.8 zincata	8
13	50.1500.74	Coperchio lat. carter	2
14	44.2118.01	Distanziale con indicatore	1
15	90.4097.00	OR Ø 55,56x3,53 (159)	1
16	91.8331.00	Cuscinetto a sfere 6305 SKF	2
17	90.1595.00	Anello radiale Ø 18x26x6	KIT 159 3
18	63.0100.22	Carter	1
19	98.2103.00	Tappo carico olio G 3/8	1
20	63.0212.65	Albero HT6311	1
	63.0218.65	Albero HT6313	1
	63.0216.65	Albero HT6315	1
21	91.4892.00	Linguetta	1
22	63.0500.66	Guida pistone	3
23	63.0300.22	Biella	3
24	90.3920.00	OR Ø 101,27x2,62 (3400)	1
25	63.1600.22	Coperchio posteriore carter - Optional	1
	63.1601.22	Coperchio posteriore carter	1

POS.	CODE CODICE	DESCRIPTION DESCRIZIONE	N. PCS.
26	99.1837.00	Vite M 6x14 UNI 5931 8.8 zincata	4
27	90.3585.00	OR Ø 10,82x1,78 (2043)	1
28	98.2041.00	Tappo G 1/4x9	1
29	97.7335.00	Spinotto Ø 9x27,5	3
30	96.7075.00	Rosetta Ø 9x25x0,5	3
31	90.5022.00	Anello antiest. Ø 6,2x9x1,5	3
32	90.3573.00	OR Ø 5,28x1,78 (2021)	3
33	44.0401.09	Pistone Ø 18	3
34	44.2115.70	Rosetta Ø 8 con collare	3
35	92.2216.00	Dado M 8 INOX	3
36	90.1641.00	Anello radiale Ø 25x62x10	1
37	50.2000.74	Piedino	2
38	96.7016.00	Rosetta Ø 8,4 UNI 1751 zincata	4
39	99.3037.00	Vite M 8x16 UNI 5739 8.8 zincata	4
40	63.0803.70	Anello di fondo Ø 18	KIT 205 3
41	90.3608.00	OR Ø 28,30x1,78 (2112)	KIT 205 3
42	90.2200.00	Anello ten. alt. Ø 18x22,5 L.P.	KIT 204-205 3
43	63.2161.70	Anello intermedio Ø 18	KIT 205 3
44	90.2210.00	Anello ten. alt. Ø 18x28x10 H.P.	KIT 204-205 3
45	98.2099.00	Tappo G 3/8x13 Nickel	1
46	98.2179.00	Tappo G 1/2x10 Nickel	1
47	96.7380.00	Rosetta Ø 17,5x23x1,5 Al	1
48	96.7514.00	Rosetta Ø 21,5x27x1,5 Al	1
49	63.2100.51	Spia livello olio - Optional	1
50	90.4051.00	OR Ø 26,58x3,53 (4106) - Optional	1
51	98.2042.00	Tappo G 1/4x9 Nickel	1